



★★★★★ **4.94/5.0 rating** on 808 reviews

Virtual + Hybrid

90 min

10 - 100,000 guests

\$40 pp

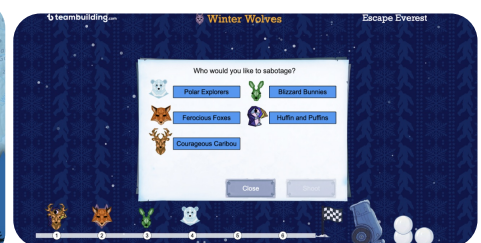
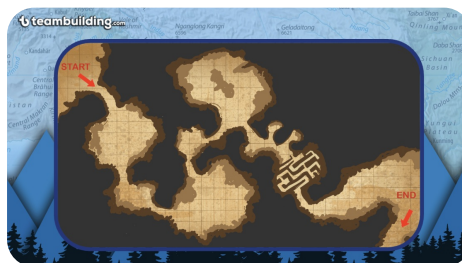
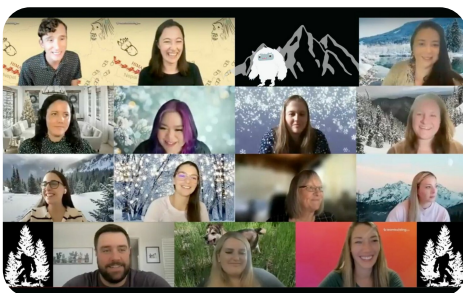
Escape Everest is a thrilling virtual escape experience for teams.

Your team will trek through the Himalayas in search of the infamous Yeti!

With a mix of large and small group dynamics, your teams will solve puzzles and mini-challenges to find the Yeti's cave and earn medallions along the way. Those medallions will aid teams in the final escape. Through mini-games, the most smartypants players can earn extra clues for their teams, gaining an edge in solving the next puzzle. All while learning actual facts and folklore about the mystical Yeti and real places along the way.

A digital dossier stores your adventurer's research and clues, making it easy for teams to work together to crack codes, unscramble messages, plot courses, and trace the tracks of the mysterious missing abominable snowman.

Once teams find the Yeti's cave, it's time to attempt to rescue the Yeti from an avalanche. Your group will make their way through the cave by solving puzzles and competing in challenges and can use their medallions in unexpected ways. The first team out of the cave claims the glory of being the first to discover the Yeti!



Agenda

<p>Intro + welcome</p> <p>We received notes from an earlier explorer who was so close to figuring out where our Yeti lives! With his notes, we can make our way through the Himalayas and find out where this Yeti is, and hopefully, we don't have any surprises along the way...hopefully.</p>	10 minutes
<p>Puzzle No. 1: Carving out the clues</p> <p>Using notes from the previous explorer, teams will have to figure out where a tree carving is leading them by decoding a cipher.</p>	10 minutes
<p>Puzzle No. 2: Path to the Pass</p> <p>Using the research in their digital dossier, teams must decode the message on a sign to pass through a treacherous path, and get closer to the Yeti.</p>	10 minutes
<p>Puzzle No. 3: Where in the world?</p> <p>Continuing to work from clues, teams will crack codes and work out coordinates to find their way to the next stop on their journey. Are your trepid explorers master navigators, or will they be left in the cold?</p>	10 minutes
<p>Puzzle No. 4: Numbers Don't Lie</p> <p>Teams work together to solve a math puzzle that reveals the location of the cave where the Yeti has taken refuge. Time is of the essence, and every second counts – literally!</p>	10 minutes
<p>Mini-games, challenges, and mind-blowing facts</p> <p>In between the main puzzles, teams will compete in rapidfire challenges for the chance to earn extra clues to give their team the advantage in the next puzzle. All the while, participants will learn fascinating tidbits about Yeti lore and the Himalayas!</p>	20 minutes
<p>The Final Escape!</p> <p>Participants will race against other teams in a series of fast-paced puzzles and challenges to complete the final escape, rescue the Yeti, and be the first team to share the Yeti with the world! Teams can throw snowballs they've won by solving puzzles to sabotage other teams and slow down their progress.</p>	15 minutes
<p>Winners + wrap-up</p> <p>We'll announce the winners, take a group photo, and wrap up the event.</p>	5 minutes
Total	90 minutes

Your Experience

- 90 minutes with a professional teambuilding.com host.
- Takes place on our Zoom account by default.
- Includes all game materials for effective team building.

- We take fun team photos you can share anywhere.

Things to Know

- You can book for an estimated # of guests and update it later. Added guests are invoiced at the per person rate and removed guests are credited to your teambuilding.com account.
- All participants must have a computer with web cam, microphone and internet connection capable of doing a video call.
- No downloads required.
- Groups of more than 75 will be split into concurrent sessions.

Your Host Team



Lead Host

This experience is led by an expert teambuilding.com host that makes sure everyone participates and has a great time.



Co-Host

A co-host manages the technical aspects and "behind the scenes" work so that it all runs smoothly.



VIP Support

VIP Support is your point of contact before the experience and handles any follow up tasks.



Client Advisor

Your client advisor can help with customizations, large groups and multi-event packages.

About teambuilding.com

We build and run world class team building experiences, with 1,000,000+ participants and 45,000+ clients to date. You can choose from 50+ experiences, both in-person and virtual that are designed to maximize participation, engagement, teamwork and happiness. Every experience is led by an expert teambuilding.com host with substantial training to make sure your experience exceeds expectations.

This document is current as of 2024/07/27.

Until a booking is confirmed, availability, pricing and terms may be subject to change.

Booking [terms & conditions](#) apply, including cancellation and refund policies.

© 2024 teambuilding.com