



★★★★★ **4.89/5.0 rating** on 487 reviews

Virtual + Hybrid

90 min

10 - 100,000 guests

\$40 pp

After a work retreat to Romania, your team finds yourselves trapped inside Dracula's castle, and to make matters worse, some of your team members have already been turned into vampires! Can you solve Count Dracula's puzzles, detect the vampires in your party, and escape before Dracula wakes up?

Learn about the real-life Dracula and his castle, brush up on vampire lore, solve puzzles, and try to catch your colleagues in the act of sabotage in this 90-minute virtual escape room and social deduction experience.

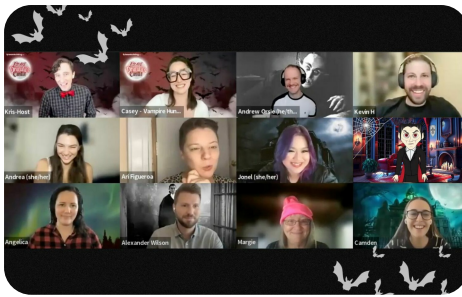
Our puzzles are expertly designed to play to the different strengths and weaknesses on your team, giving everyone a chance to shine, whether it's at a memory-based challenge, a riddle-solving conundrum, or bringing the group together to align.

Players will work out riddles to pick the right potion, move debris away from secret tunnels, consult crystal balls, grab tools to fight off vampires and test their memories by recalling Dracula's cryptic clues. Meanwhile, the group's vampires will subtly sabotage these efforts while evading detection.

Teammates only have one hour to complete the entire escape, and each puzzle and mini-game also has a time limit. This atmosphere creates a high-pressure yet low-stakes environment where coworkers must think quickly, engage their intellect, employ peak teamwork, and sharpen their people-reading skills.

This experience is ideal for teams who love a challenge. Also, since breakout rooms are randomized for each puzzle, the game is great for mingling.

Will your team outsmart Dracula? Can your crew find their way out of the creepy castle? Will your crew identify all the fanged traitors, or will the bloodsuckers prevail? Only time will tell, and the clock is ticking!



Agenda

<p>Intro, welcome, and assignments</p> <p>Your hosts will welcome your group before setting the stage for the ultimate virtual escape room and social deduction experience. Plus, your guests will learn their fate: Are they humans working together to escape the castle or are they a vampire, bent on trapping the humans forever?</p>	10 minutes
<p>The challenge begins!</p> <p>Dracula appears to give your group their first set of cryptic clues, and let them know that the clock is officially ticking. Your team now has 60 minutes to find their way out of the castle. Your group will rotate through different breakout rooms to try to identify the vampires and earn enough clues to escape Dracula's Castle before Dracula wakes up and takes his revenge. Sample challenges include potion puzzles, clearing debris, identifying famous vampires, and more. Our puzzles are all expertly designed to play to the different strengths and weaknesses on your team, giving everyone a chance to shine, whether it's at a memory-based challenge, a riddle-solving conundrum, or bringing the group together to align.</p>	10 minutes
<p>Puzzle No. 1: Potions!</p> <p>Your group stumbles upon Dracula's laboratory, and must choose the correct potion to proceed to other rooms in the castle. Players are sent to breakout rooms with riddles to figure out the correct concoction. Beware, the vampires in your midst might try to logic you into picking the wrong drink to slow you down!</p>	10-15 minutes
<p>Puzzle No. 2: Dracula's Secret Passage</p> <p>The group approaches a system of secret tunnels blocked by debris. The narrow passageways can only fit a couple of bodies at a time, so teams will have to choose wisely to elect representatives to clear the way. Teams will have time to debate the best choice. Choose a vampire for the task, you may not be able to pass!</p>	10-15 minutes
<p>Puzzle No. 3: Memory</p> <p>Dracula re-emerges and tests your team's powers of observation. Will players be able to recall the details needed to unlock the final escape?</p>	10-15 minutes

<p>Puzzle No. 4: The Final Escape</p> <p>Your team reaches the final stop of your journey. The only thing that stands between you and escape is a single locked door, but finding the key will require your group to split up and each solve a series of puzzles including a math puzzle, a logic puzzle, and a word-based challenge.</p>	10-15 minutes
<p>Mini-games, challenges, and history</p> <p>In between the main puzzles, teams will compete in mini games and challenges. These tasks can help humans gain advantages in upcoming puzzles and help them notice suspicious vampire activity in their midst. The number of these activities will depend on the speed of the rest of the game. All the while, players will learn about real life history!</p>	15-20 minutes
<p>Did the vampires or humans win?</p> <p>Our puzzles are all expertly designed to play to the different strengths and weaknesses on your team, giving everyone a chance to shine, whether it's at a memory-based challenge, a riddle-solving conundrum, or bringing the group together to align.</p>	10 minutes
Total	90 minutes

Your Experience

- 90 minutes with a professional teambuilding.com host.
- Takes place on our Zoom account by default.
- Includes all game materials for effective team building.
- We take fun team photos you can share anywhere.
- Features rotating breakout room mechanics for groups of 10+ to enhance connection, collaboration, strategy, and fun.

Things to Know

- You can book for an estimated # of guests and update it later. Added guests are invoiced at the per person rate and removed guests are credited to your teambuilding.com account.
- All participants must have a computer with web cam, microphone and internet connection capable of doing a video call.
- No downloads required.
- For groups of more than 50, we'll set your team up with concurrent sessions.

Your Host Team



Lead Host

This experience is led by an expert teambuilding.com host that makes sure everyone participates and has a great time.



Co-Host

A co-host manages the technical aspects and "behind the scenes" work so that it all runs smoothly.



VIP Support

VIP Support is your point of contact before the experience and handles any follow up tasks.



Client Advisor

Your client advisor can help with customizations, large groups and multi-event packages.

About teambuilding.com

We build and run world class team building experiences, with 1,000,000+ participants and 45,000+ clients to date. You can choose from 50+ experiences, both in-person and virtual that are designed to maximize participation, engagement, teamwork and happiness. Every experience is led by an expert teambuilding.com host with substantial training to make sure your experience exceeds expectations.

This document is current as of 2024/05/15.

Until a booking is confirmed, availability, pricing and terms may be subject to change.

Booking [terms & conditions](#) apply, including cancellation and refund policies.

© 2024 teambuilding.com